

CYCLOHEXYL BROMIDE FOR SYNTHESIS MSDS

CAS-No.: 108-85-0 MSDS

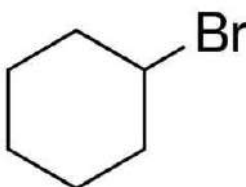


MATERIAL SAFETY DATA SHEET (MSDS)

SECTION 1: Identification of the substance/mixture and of the company/undertaking

1.1. Product identifier

Product form : Substance
:
CAS-No. : 108-85-0
Product code : B-00916
Chemical structure :



1.2. Relevant identified uses of the substance or mixture and uses advised against

1.2.1. Relevant identified uses

Industrial/Professional use spec : Industrial
For professional use only

1.2.2. Uses advised against

No additional information available

1.3. Details of the supplier of the safety data sheet

Bio-Chem Chemicals
5455, Nicholson Road Science Market,
Ambala Cantt. 133001 Haryana (India)
+91-82952 41953
info@biofinechemical.com - www.biofinechemical.com

1.4. Emergency telephone number

Emergency number : +91 99921 51495 (10.00am - 06.30pm) (Office Hours)

SECTION 2: Hazards identification

2.1. Classification of the substance or mixture

Classification according to Regulation (EC) No. 1272/2008 [CLP]
Not classified

Classification according to Directive 67/548/EEC [DSD] or 1999/45/EC [DPD]
Not classified

CYCLOHEXYL BROMIDE FOR SYNTHESIS

Safety Data Sheet

Adverse physicochemical, human health and environmental effects

No additional information available

2.2. Label elements

Labelling according to Regulation (EC) No. 1272/2008 [CLP]

No labelling applicable

2.3. Other hazards

No additional information available

SECTION 3: Composition/information on ingredients

3.1. Substances

Name : CYCLOHEXYL BROMIDE FOR SYNTHESIS
CAS-No. : 108-85-0

Full text of R- and H-statements: see section 16

3.2. Mixtures

Not applicable

SECTION 4: First aid measures

4.1. Description of first aid measures

First-aid measures after inhalation : Assure fresh air breathing. Allow the victim to rest.
First-aid measures after skin contact : Wash with plenty of water/....
First-aid measures after eye contact : Rinse immediately with plenty of water.
First-aid measures after ingestion : Rinse mouth. Do not induce vomiting.

4.2. Most important symptoms and effects, both acute and delayed

No additional information available

4.3. Indication of any immediate medical attention and special treatment needed

Treat symptomatically.

SECTION 5: Firefighting measures

5.1. Extinguishing media

Suitable extinguishing media : Carbon dioxide. Dry powder. Foam. Water spray.
Unsuitable extinguishing media : Do not use a heavy water stream.

5.2. Special hazards arising from the substance or mixture

No additional information available

5.3. Advice for firefighters

Protection during firefighting : Do not enter fire area without proper protective equipment, including respiratory protection.

CYCLOHEXYL BROMIDE FOR SYNTHESIS

Safety Data Sheet

SECTION 6: Accidental release measures

6.1. Personal precautions, protective equipment and emergency procedures

6.1.1. For non-emergency personnel

Emergency procedures : Evacuate unnecessary personnel.

6.1.2. For emergency responders

Protective equipment : Use personal protective equipment as required.

6.2. Environmental precautions

Avoid release to the environment.

6.3. Methods and material for containment and cleaning up

Methods for cleaning up : Collect spillage. On land, sweep or shovel into suitable containers.

6.4. Reference to other sections

No additional information available

SECTION 7: Handling and storage

7.1. Precautions for safe handling

Precautions for safe handling : Avoid contact with skin and eyes. Do not breathe vapours. Provide good ventilation in process area to prevent formation of vapour.

7.2. Conditions for safe storage, including any incompatibilities

Storage conditions : Store in a well-ventilated place. Keep container tightly closed.

7.3. Specific end use(s)

No additional information available

SECTION 8: Exposure controls/personal protection

8.1. Control parameters

No additional information available

8.2. Exposure controls

Hand protection : Protective gloves

Eye protection : Chemical goggles or safety glasses

Skin and body protection : Wear suitable protective clothing

Respiratory protection : [In case of inadequate ventilation] wear respiratory protection.

SECTION 9: Physical and chemical properties

9.1. Information on basic physical and chemical properties

Physical state : Liquid

Molecular mass : 163.06 g/mol

Colour : Clear yellowish.

Odour : unpleasant odor.

Odour threshold : No data available

CYCLOHEXYL BROMIDE FOR SYNTHESIS

Safety Data Sheet

pH	: No data available
Relative evaporation rate (butylacetate=1)	: No data available
Melting point	: No data available
Freezing point	: No data available
Boiling point	: 166 - 167 °C
Flash point	: 63 °C
Auto-ignition temperature	: No data available
Decomposition temperature	: No data available
Flammability (solid, gas)	: No data available
Vapour pressure	: No data available
Relative vapour density at 20 °C	: 5.62
Relative density	: No data available
Density	: 1.324 g/cm ³
Solubility	: Water: Insoluble in water
Log Pow	: No data available
Viscosity, kinematic	: No data available
Viscosity, dynamic	: No data available
Explosive properties	: No data available
Oxidising properties	: No data available
Explosive limits	: No data available

9.2. Other information

No additional information available

SECTION 10: Stability and reactivity

10.1. Reactivity

No additional information available

10.2. Chemical stability

Stable under normal conditions.

10.3. Possibility of hazardous reactions

No additional information available

10.4. Conditions to avoid

Air contact. Direct sunlight. Heat. Open flame.

10.5. Incompatible materials

No additional information available

10.6. Hazardous decomposition products

No additional information available

CYCLOHEXYL BROMIDE FOR SYNTHESIS

Safety Data Sheet

SECTION 11: Toxicological information

11.1. Information on toxicological effects

Acute toxicity : Not classified

Skin corrosion/irritation : Not classified

Serious eye damage/irritation : Not classified

Respiratory or skin sensitisation : Not classified

Germ cell mutagenicity : Not classified

Carcinogenicity : Not classified

Reproductive toxicity : Not classified

STOT-single exposure : Not classified

STOT-repeated exposure : Not classified

Aspiration hazard : Not classified

SECTION 12: Ecological information

12.1. Toxicity

No additional information available

12.2. Persistence and degradability

No additional information available

12.3. Bioaccumulative potential

No additional information available

12.4. Mobility in soil

No additional information available

12.5. Results of PBT and vPvB assessment

No additional information available

12.6. Other adverse effects

No additional information available

SECTION 13: Disposal considerations

13.1. Waste treatment methods

No additional information available

CYCLOHEXYL BROMIDE FOR SYNTHESIS

Safety Data Sheet

SECTION 14: Transport information

In accordance with ADR / RID / IMDG / IATA / ADN

14.1. UN number

UN-No. (ADR) : Not applicable
UN-No. (IMDG) : Not applicable
UN-No. (IATA) : Not applicable
UN-No. (ADN) : Not applicable
UN-No. (RID) : Not applicable

14.2. UN proper shipping name

Proper Shipping Name (ADR) : Not applicable
Proper Shipping Name (IMDG) : Not applicable
Proper Shipping Name (IATA) : Not applicable
Proper Shipping Name (ADN) : Not applicable
Proper Shipping Name (RID) : Not applicable

14.3. Transport hazard class(es)

ADR

Transport hazard class(es) (ADR) : Not applicable

IMDG

Transport hazard class(es) (IMDG) : Not applicable

IATA

Transport hazard class(es) (IATA) : Not applicable

ADN

Transport hazard class(es) (ADN) : Not applicable

RID

Transport hazard class(es) (RID) : Not applicable

14.4. Packing group

Packing group (ADR) : Not applicable
Packing group (IMDG) : Not applicable
Packing group (IATA) : Not applicable
Packing group (ADN) : Not applicable
Packing group (RID) : Not applicable

14.5. Environmental hazards

Dangerous for the environment : No
Marine pollutant : No
Other information : No supplementary information available

14.6. Special precautions for user

- Overland transport

No data available

- Transport by sea

No data available

CYCLOHEXYL BROMIDE FOR SYNTHESIS

Safety Data Sheet

- Air transport

No data available

- Inland waterway transport

No data available

- Rail transport

No data available

14.7. Transport in bulk according to Annex II of MARPOL 73/78 and the IBC Code

Not applicable

SECTION 15: Regulatory information

15.1. Safety, health and environmental regulations/legislation specific for the substance or mixture

15.1.1. EU-Regulations

No REACH Annex XVII restrictions

CYCLOHEXYL BROMIDE FOR SYNTHESIS is not on the REACH Candidate List

CYCLOHEXYL BROMIDE FOR SYNTHESIS is not on the REACH Annex XIV List

15.1.2. National regulations

Germany

12th Ordinance Implementing the Federal Immission Control Act - 12.BImSchV : Is not subject of the 12. BImSchV (Hazardous Incident Ordinance)

Netherlands

SZW-lijst van kankerverwekkende stoffen : The substance is not listed

SZW-lijst van mutagene stoffen : The substance is not listed

NIET-limitatieve lijst van voor de voortplanting giftige stoffen – Borstvoeding : The substance is not listed

NIET-limitatieve lijst van voor de voortplanting giftige stoffen – Vruchtbaarheid : The substance is not listed

NIET-limitatieve lijst van voor de voortplanting giftige stoffen – Ontwikkeling : The substance is not listed

Denmark

Class for fire hazard : Class III-1

Store unit : 50 liter

Classification remarks : Flammable according to the Danish Ministry of Justice; Emergency management guidelines for the storage of flammable liquids must be followed

15.2. Chemical safety assessment

No additional information available

CYCLOHEXYL BROMIDE FOR SYNTHESIS

Safety Data Sheet

SECTION 16: Other information

This information is based on our current knowledge and is intended to describe the product for the purposes of health, safety and environmental requirements only. It should not therefore be construed as guaranteeing any specific property of the product