

# 3-CHLOROTOLUENE FOR SYNTHESIS MSDS

CAS-No.: 108-41-8 MSDS

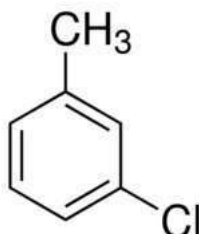


## MATERIAL SAFETY DATA SHEET (MSDS)

### SECTION 1: Identification of the substance/mixture and of the company/undertaking

#### 1.1. Product identifier

Product form : Substance  
:  
CAS-No. : 108-41-8  
Product code : B-00788  
Chemical structure :



#### 1.2. Relevant identified uses of the substance or mixture and uses advised against

##### 1.2.1. Relevant identified uses

Industrial/Professional use spec : Industrial  
For professional use only

##### 1.2.2. Uses advised against

No additional information available

#### 1.3. Details of the supplier of the safety data sheet

Bio-Chem Chemicals  
5455, Nicholson Road Science Market,  
Ambala Cantt. 133001 Haryana (India)  
+91-82952 41953  
[info@biofinechemical.com](mailto:info@biofinechemical.com) - [www.biofinechemical.com](http://www.biofinechemical.com)

#### 1.4. Emergency telephone number

Emergency number : +91 99921 51495 (10.00am - 06.30pm) (Office Hours)

### SECTION 2: Hazards identification

#### 2.1. Classification of the substance or mixture

Classification according to Regulation (EC) No. 1272/2008 [CLP]

Acute toxicity (inhal.), H332

Category 4

Hazardous to the aquatic H411

environment — Chronic

Hazard, Category 2

Full text of H statements : see section 16

# 3-CHLOROTOLUENE FOR SYNTHESIS

## Safety Data Sheet

---

### Classification according to Directive 67/548/EEC [DSD] or 1999/45/EC [DPD]

Xn; R20

N; R51/53

Full text of R-phrases: see section 16

### Adverse physicochemical, human health and environmental effects

No additional information available

## 2.2. Label elements

### Labelling according to Regulation (EC) No. 1272/2008 [CLP]

Hazard pictograms (CLP) :



GHS07

GHS09

Signal word (CLP) :

Warning

Hazard statements (CLP) :

H332 - Harmful if inhaled.

H411 - Toxic to aquatic life with long lasting effects.

Precautionary statements (CLP) :

P273 - Avoid release to the environment.

## 2.3. Other hazards

No additional information available

## SECTION 3: Composition/information on ingredients

### 3.1. Substances

Name :

3-CHLOROTOLUENE FOR SYNTHESIS

CAS-No. :

108-41-8

Full text of R- and H-statements: see section 16

### 3.2. Mixtures

Not applicable

## SECTION 4: First aid measures

### 4.1. Description of first aid measures

First-aid measures after inhalation : Assure fresh air breathing. Allow the victim to rest.

First-aid measures after skin contact : Wash with plenty of water/.... Get immediate medical advice/attention.

First-aid measures after eye contact : Rinse cautiously with water for several minutes. Remove contact lenses, if present and easy to do. Continue rinsing. Get medical advice/attention.

First-aid measures after ingestion : Rinse mouth. Do not induce vomiting.

# 3-CHLOROTOLUENE FOR SYNTHESIS

## Safety Data Sheet

---

### 4.2. Most important symptoms and effects, both acute and delayed

Symptoms/effects after inhalation : Harmful if inhaled.

### 4.3. Indication of any immediate medical attention and special treatment needed

Treat symptomatically.

## SECTION 5: Firefighting measures

### 5.1. Extinguishing media

Suitable extinguishing media : Carbon dioxide. Dry powder. Foam. Water spray.

Unsuitable extinguishing media : Do not use a heavy water stream.

### 5.2. Special hazards arising from the substance or mixture

Fire hazard : Flammable liquid and vapour.

Explosion hazard : May form flammable/explosive vapour-air mixture.

### 5.3. Advice for firefighters

Protection during firefighting : Do not enter fire area without proper protective equipment, including respiratory protection.

## SECTION 6: Accidental release measures

### 6.1. Personal precautions, protective equipment and emergency procedures

General measures : Remove ignition sources. No open flames. No smoking. Use special care to avoid static electric charges.

#### 6.1.1. For non-emergency personnel

Emergency procedures : Evacuate unnecessary personnel.

#### 6.1.2. For emergency responders

Protective equipment : Use personal protective equipment as required.

Emergency procedures : Ventilate area.

### 6.2. Environmental precautions

Avoid release to the environment.

### 6.3. Methods and material for containment and cleaning up

Methods for cleaning up : Collect spillage. On land, sweep or shovel into suitable containers.

### 6.4. Reference to other sections

No additional information available

## SECTION 7: Handling and storage

### 7.1. Precautions for safe handling

Precautions for safe handling : Avoid contact with skin and eyes. Do not breathe vapours. Provide good ventilation in process area to prevent formation of vapour.

Hygiene measures : Wash hands and other exposed areas with mild soap and water before eating, drinking or smoking and when leaving work.

### 7.2. Conditions for safe storage, including any incompatibilities

Technical measures : Proper grounding procedures to avoid static electricity should be followed. Use explosion-proof electrical/ventilating/lighting equipment.

Storage conditions : Keep container tightly closed. Keep in fireproof place.

Incompatible materials : Heat sources.

### 7.3. Specific end use(s)

No additional information available

# 3-CHLOROTOLUENE FOR SYNTHESIS

## Safety Data Sheet

---

### SECTION 8: Exposure controls/personal protection

#### 8.1. Control parameters

No additional information available

#### 8.2. Exposure controls

Hand protection : Protective gloves  
Eye protection : Chemical goggles or safety glasses  
Skin and body protection : Wear suitable protective clothing  
Respiratory protection : [In case of inadequate ventilation] wear respiratory protection.

### SECTION 9: Physical and chemical properties

#### 9.1. Information on basic physical and chemical properties

Physical state : Liquid  
Molecular mass : 126.6 g/mol  
Colour : Light yellow.  
Odour : No data available  
Odour threshold : No data available  
pH : No data available  
Relative evaporation rate (butylacetate=1) : No data available  
Melting point : -48 °C  
Freezing point : No data available  
Boiling point : 160 - 162 °C  
Flash point : 52 °C  
Auto-ignition temperature : No data available  
Decomposition temperature : No data available  
Flammability (solid, gas) : Flammable  
Vapour pressure : 3.6 mbar at 20° C  
Relative vapour density at 20 °C : No data available  
Relative density : No data available  
Density : 1.072 g/cm<sup>3</sup>  
Solubility : Water: Slightly soluble in water  
Log Pow : No data available  
Viscosity, kinematic : No data available  
Viscosity, dynamic : No data available

# 3-CHLOROTOLUENE FOR SYNTHESIS

## Safety Data Sheet

---

Explosive properties : No data available

Oxidising properties : No data available

Explosive limits : No data available

### 9.2. Other information

No additional information available

## SECTION 10: Stability and reactivity

### 10.1. Reactivity

No additional information available

### 10.2. Chemical stability

Stable under normal conditions.

### 10.3. Possibility of hazardous reactions

No additional information available

### 10.4. Conditions to avoid

Open flame. Heat. Sparks.

### 10.5. Incompatible materials

Oxidizing agent.

### 10.6. Hazardous decomposition products

No additional information available

## SECTION 11: Toxicological information

### 11.1. Information on toxicological effects

Acute toxicity : Inhalation: Harmful if inhaled.

Skin corrosion/irritation : Not classified

Serious eye damage/irritation : Not classified

Respiratory or skin sensitisation : Not classified

Germ cell mutagenicity : Not classified

Carcinogenicity : Not classified

Reproductive toxicity : Not classified

STOT-single exposure : Not classified

STOT-repeated exposure : Not classified

Aspiration hazard : Not classified

## SECTION 12: Ecological information

### 12.1. Toxicity

Ecology - water : Toxic to aquatic life with long lasting effects.

# 3-CHLOROTOLUENE FOR SYNTHESIS

## Safety Data Sheet

---

### 12.2. Persistence and degradability

<b>3-CHLOROTOLUENE FOR SYNTHESIS (108-41-8)</b>	
Persistence and degradability	May cause long-term adverse effects in the environment.

### 12.3. Bioaccumulative potential

No additional information available

### 12.4. Mobility in soil

No additional information available

### 12.5. Results of PBT and vPvB assessment

No additional information available

### 12.6. Other adverse effects

No additional information available

## SECTION 13: Disposal considerations

### 13.1. Waste treatment methods

Product/Packaging disposal recommendations : Dispose of contents/container to hazardous or special waste collection point, in accordance with local, regional, national and/or international regulation.

## SECTION 14: Transport information

In accordance with ADR / RID / IMDG / IATA / ADN

### 14.1. UN number

UN-No. (ADR) : 2238  
UN-No. (IMDG) : 2238  
UN-No. (IATA) : 2238  
UN-No. (ADN) : 2238  
UN-No. (RID) : 2238

### 14.2. UN proper shipping name

Proper Shipping Name (ADR) : CHLOROTOLUENES  
Proper Shipping Name (IMDG) : CHLOROTOLUENES  
Proper Shipping Name (IATA) : Chlorotoluenes  
Proper Shipping Name (ADN) : CHLOROTOLUENES  
Proper Shipping Name (RID) : CHLOROTOLUENES  
Transport document description (ADR) : UN 2238 CHLOROTOLUENES, 3, III, (D/E), ENVIRONMENTALLY HAZARDOUS  
Transport document description (IMDG) : UN 2238 CHLOROTOLUENES, 3, III, MARINE POLLUTANT/ENVIRONMENTALLY HAZARDOUS (43°C c.c.)  
Transport document description (IATA) : UN 2238 Chlorotoluenes, 3, III, ENVIRONMENTALLY HAZARDOUS  
Transport document description (ADN) : UN 2238 CHLOROTOLUENES, 3, III, ENVIRONMENTALLY HAZARDOUS  
Transport document description (RID) : UN 2238 CHLOROTOLUENES, 3, III, ENVIRONMENTALLY HAZARDOUS

### 14.3. Transport hazard class(es)

ADR

# 3-CHLOROTOLUENE FOR SYNTHESIS

## Safety Data Sheet

---

Transport hazard class(es) (ADR) : 3

Danger labels (ADR) : 3



### IMDG

Transport hazard class(es) (IMDG) : 3

Danger labels (IMDG) : 3



### IATA

Transport hazard class(es) (IATA) : 3

Hazard labels (IATA) : 3



### ADN

Transport hazard class(es) (ADN) : 3

Danger labels (ADN) : 3



### RID

Transport hazard class(es) (RID) : 3

Danger labels (RID) : 3



### 14.4. Packing group

Packing group (ADR) : III

Packing group (IMDG) : III

Packing group (IATA) : III

Packing group (ADN) : III

Packing group (RID) : III

### 14.5. Environmental hazards

Dangerous for the environment : Yes

# 3-CHLOROTOLUENE FOR SYNTHESIS

## Safety Data Sheet

---

Marine pollutant : Yes  
Other information : No supplementary information available

### 14.6. Special precautions for user

#### - Overland transport

Classification code (ADR) : F1  
Limited quantities (ADR) : 5I  
Excepted quantities (ADR) : E1  
Packing instructions (ADR) : P001, IBC03, LP01, R001  
Mixed packing provisions (ADR) : MP19  
Portable tank and bulk container instructions (ADR) : T2  
Portable tank and bulk container special provisions (ADR) : TP1  
Tank code (ADR) : LGBF  
Vehicle for tank carriage : FL  
Transport category (ADR) : 3  
Special provisions for carriage - Packages (ADR) : V12  
Special provisions for carriage - Operation (ADR) : S2  
Hazard identification number (Kemler No.) : 30  
Orange plates :



Tunnel restriction code (ADR) : D/E  
EAC code : 3Y

#### - Transport by sea

Packing instructions (IMDG) : P001, LP01  
IBC packing instructions (IMDG) : IBC03  
Tank instructions (IMDG) : T2  
Tank special provisions (IMDG) : TP1  
EmS-No. (Fire) : F-E  
EmS-No. (Spillage) : S-D  
Stowage category (IMDG) : A  
Flash point (IMDG) : 43°C to 47°C c.c.  
Properties and observations (IMDG) : Colourless to brown liquids. Flashpoint: 43°C to 47°C c.c. Immiscible with water. When involved in a fire, evolve toxic gases. Harmful by skin contact or by inhalation. Irritating to eyes and mucous membranes.  
MFAG-No : 129

#### - Air transport

PCA Excepted quantities (IATA) : E1  
PCA Limited quantities (IATA) : Y344  
PCA limited quantity max net quantity (IATA) : 10L  
PCA packing instructions (IATA) : 355  
PCA max net quantity (IATA) : 60L  
CAO packing instructions (IATA) : 366  
CAO max net quantity (IATA) : 220L  
ERG code (IATA) : 3L



# 3-CHLOROTOLUENE FOR SYNTHESIS

## Safety Data Sheet

---

### - Inland waterway transport

Classification code (ADN)	: F1
Limited quantities (ADN)	: 5 L
Excepted quantities (ADN)	: E1
Carriage permitted (ADN)	: T
Equipment required (ADN)	: PP, EX, A
Ventilation (ADN)	: VE01
Number of blue cones/lights (ADN)	: 0

### - Rail transport

Classification code (RID)	: F1
Excepted quantities (RID)	: E1
Packing instructions (RID)	: P001, IBC03, LP01, R001
Mixed packing provisions (RID)	: MP19
Portable tank and bulk container instructions (RID)	: T2
Portable tank and bulk container special provisions (RID)	: TP1
Tank codes for RID tanks (RID)	: LGBF
Transport category (RID)	: 3
Special provisions for carriage – Packages (RID)	: W12
Colis express (express parcels) (RID)	: CE4
Hazard identification number (RID)	: 30

### 14.7. Transport in bulk according to Annex II of MARPOL 73/78 and the IBC Code

Not applicable

## SECTION 15: Regulatory information

### 15.1. Safety, health and environmental regulations/legislation specific for the substance or mixture

#### 15.1.1. EU-Regulations

No REACH Annex XVII restrictions

3-CHLOROTOLUENE FOR SYNTHESIS is not on the REACH Candidate List

3-CHLOROTOLUENE FOR SYNTHESIS is not on the REACH Annex XIV List

#### 15.1.2. National regulations

##### Germany

12th Ordinance Implementing the Federal Immission Control Act - 12.BImSchV : Is not subject of the 12. BImSchV (Hazardous Incident Ordinance)

##### Netherlands

SZW-lijst van kankerverwekkende stoffen	: The substance is not listed
SZW-lijst van mutagene stoffen	: The substance is not listed
NIET-limitatieve lijst van voor de voortplanting giftige stoffen – Borstvoeding	: The substance is not listed

# 3-CHLOROTOLUENE FOR SYNTHESIS

## Safety Data Sheet

NIET-limitatieve lijst van voor de voortplanting giftige stoffen – Vruchtbaarheid : The substance is not listed

NIET-limitatieve lijst van voor de voortplanting giftige stoffen – Ontwikkeling : The substance is not listed

### Denmark

Class for fire hazard : Class II-1

Store unit : 5 liter

Classification remarks : R10 <H332;H411>; Emergency management guidelines for the storage of flammable liquids must be followed

Recommendations Danish Regulation : Young people below the age of 18 years are not allowed to use the product

### 15.2. Chemical safety assessment

No additional information available

### SECTION 16: Other information

Full text of R-, H- and EUH-statements:

Acute Tox. 4 (Inhalation)	Acute toxicity (inhal.), Category 4
Aquatic Chronic 2	Hazardous to the aquatic environment — Chronic Hazard, Category 2
H332	Harmful if inhaled.
H411	Toxic to aquatic life with long lasting effects.
R20	Harmful by inhalation
R51/53	Toxic to aquatic organisms, may cause long-term adverse effects in the aquatic environment
N	Dangerous for the environment
Xn	Harmful

*This information is based on our current knowledge and is intended to describe the product for the purposes of health, safety and environmental requirements only. It should not therefore be construed as guaranteeing any specific property of the product*